

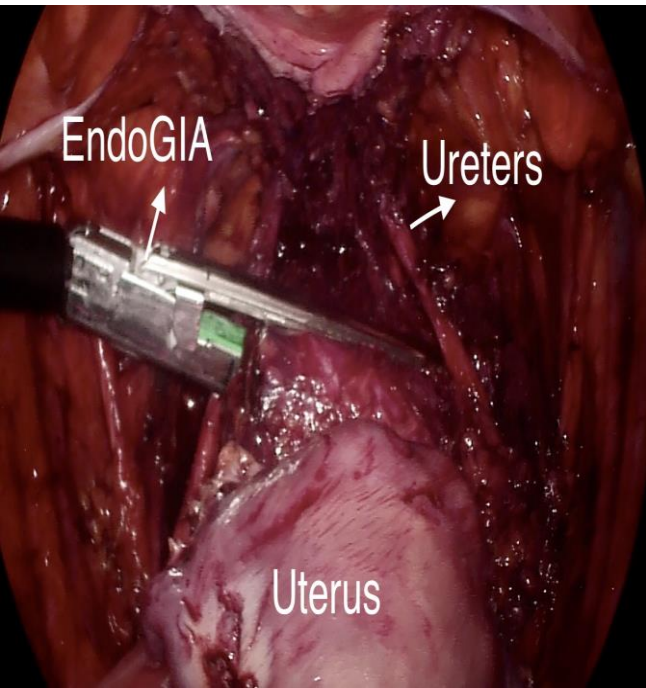


Vaginal Closure with EndoGIA to Prevent Tumor Spillage in Laparoscopic Radical Hysterectomy for Cervical Cancer

Gökhan Boyraz

Gynecologic Oncology, Etlik Zübeyde Hanım Hospital

Ankara, Turkey



LACC TRIAL;2018

The NEW ENGLAND JOURNAL of MEDICINE

ORIGINAL ARTICLE

Minimally Invasive versus Abdominal Radical Hysterectomy for Cervical Cancer

Pedro T. Ramirez, M.D., Michael Frumovitz, M.D., Rene Pareja, M.D.,
Aldo Lopez, M.D., Marcelo Vieira, M.D., Reitan Ribeiro, M.D., Alessandro Buda, M.D.,
Xiaojian Yan, M.D., Yao Shuzhong, M.D., Naven Chetty, M.D., David Isla, M.D.,
Mariano Tamura, M.D., Tao Zhu, M.D., Kristy P. Robledo, Ph.D., Val Gebiski, M.Stat.,
Rebecca Asher, M.Sc., Vanessa Behan, B.S.N., James L. Nicklin, M.D.,
Robert L. Coleman, M.D., and Andreas Obermair, M.D.

What is the possible reason for the inferior outcomes with MIS?

- **Radicality ?**
- **Use of uterine manipulator?**
- **Effect of the CO2 insufflation?**
- **Colpotomy technique?**

The influence of pneumoperitoneum used in laparoscopic surgery on an intraabdominal tumor growth.

Volz J¹, Köster S, Spacek Z, Paweletz N.

⊖ Author information

1 Department of Gynaecology and Obstetrics, Klinikum Mannheim, Faculty of Clinical Medicine of the University of Heidelberg, Mannheim, Germany.

The aim; to examine **the influence of a pneumoperitoneum** on the morphology of the peritoneum and the intraperitoneal tumor cell implantation and growth

- **Mice were stratified into 2 groups of 36 animals each**
- **Group 1;** CO(2) pneumoperitoneum was induced for 30 minutes, and 200,000 cells of a malignant melanoma were injected intraperitoneally.
- **In Group 2;** only tumor cells were injected.

Results;

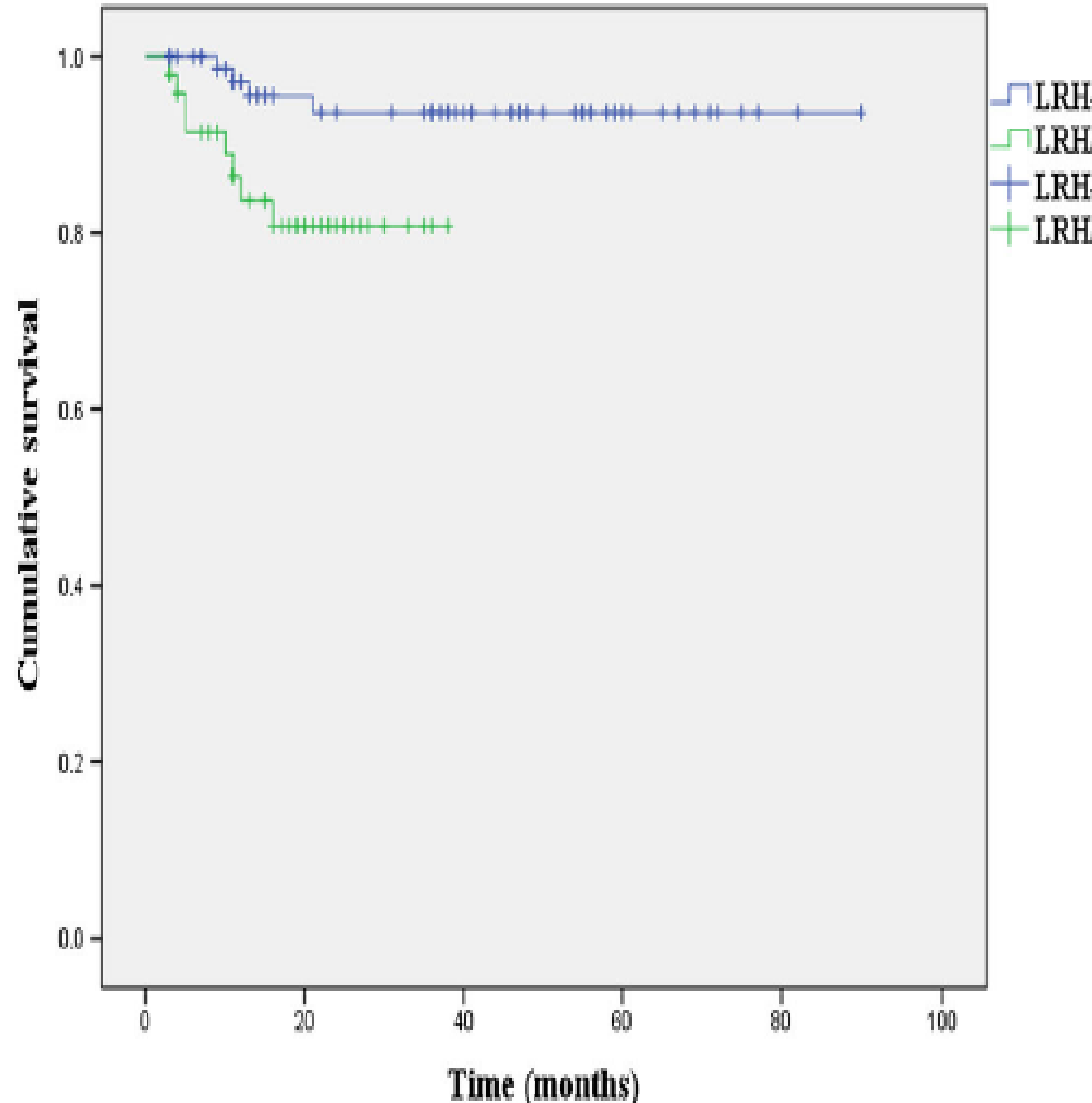
- **Group 1;** Tumor cells attached to the free basal lamina and formed predominantly **diffuse metastases** throughout the peritoneum within the next 96 hours.
- **Group 2; No diffuse changes of the peritoneal surface and no diffuse metastases** were observed in the second group. Singular metastases followed gravity and involved the anterior abdominal wall.
- The pneumoperitoneum provokes particular damage to the peritoneum that induces a specific intraperitoneal tumor growth.

Patterns of recurrence and survival after abdominal versus laparoscopic/robotic radical hysterectomy in patients with early cervical cancer

Tae-Wook Kong^{1,2}, Suk-Joon Chang^{1,2}, Xianling Piao⁶, Jiheum Paek^{1,2}, Yonghee Lee^{1,3},
Eun Ju Lee^{1,4}, Mison Chun^{1,5} and Hee-Sug Ryu^{1,2}

¹Gynecologic Cancer Center, ²Department of Obstetrics and Gynecology, ³Pathology, ⁴Radiology, ⁵Radiation Oncology, Ajou University School of Medicine, and ⁶Ajou University Graduate School of Medicine, Suwon, Korea

- Retrospective analysis of **128 patients** with FIGO stage IB and IIA cervical cancer.
- LRH through **vaginal colpotomy** (LRH-VC; 79 patients) and LRH/RRH through **intracorporeal colpotomy** (LRH/RRH-IC; 49 patients)
- **Laparoscopic intracorporeal colpotomy under CO2 pneumoperitoneum** ($P < 0.041$, odds ratio 7.038) represented a strong prognostic factor related to disease recurrence.



- **At this point, we are at a very important milestone;**
- **Should we completely give up MIS or could we develop new approaches to prevent unfavorable outcomes of MIS in patients with early stage cervical cancer?**



Vaginal Closure with EndoGIA to Prevent Tumor Spillage in Laparoscopic Radical Hysterectomy for Cervical Cancer

Gokhan Boyraz, MD  , **Alper Karalok, MD, Derman Basaran, MD, Taner Turan, MD**

Department of Gynecologic Oncology, Etlik Zubeyde Hanim Women's Health Training and Research Hospital, Ankara, Turkey

Published Online: July 29, 2018



▶ **CASE**

- ▶ 40 years-old woman
- ▶ Clinical stage IB1 squamous carcinoma of cervix
- ▶ **Type C Laparoscopic Hysterectomy + Bilateral Pelvic Lymph Node Dissection + Bilateral Ovarian Suspension**
- ▶ **Vagina was stapled with EndoGIA before colpotomy**
- ▶ Postoperative outcome was eventles.